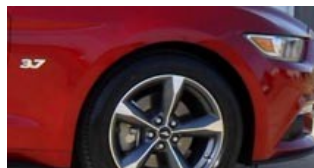


SUPER SIX MOTORSPORTS



NEW PRODUCTS specifically for 2015-up 3.7L V6 Mustang. All of our other 2011-2014 3.7 engine products also fit 2015-up

SSM exclusive custom ZEX wet nitrous system: \$975. Our custom system comes pre jetted to safely add 50 or 75 RWHP on the stock engine. Requires premium fuel, **PCM tuning not required but recommended.** Includes the nozzle, jets, hoses, bottle, pressure gage, plug-in power adapter, nitrous management unit, purge system and pre-gapped 1-range colder non-projected nose spark plugs. Everything you need to add either 50 or 75 RWHP to your 2015-up 3.7.

Custom engine-mount NMU bracket: \$ 150.

Custom plug and play wiring harness: \$150.

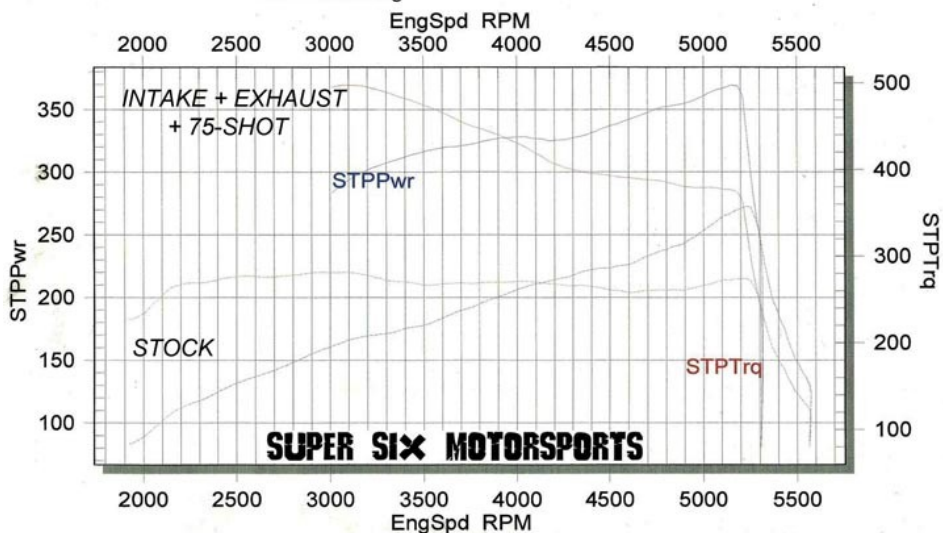
Installs through firewall grommet behind throttle pedal, simple installation.



With no computer tuning, we gained almost 150HP and incredible torque with our intake and exhaust products and our custom nitrous kit with no tuning required. Note that maximum power restricted at the 4th gear speed limiter of 5200 RPM by the stock computer. Actual gains in HP will be higher when tuning allows higher 4th gear RPM levels, timing management, fueling, etc. As you can see from the charts, HP is still rising at the stock 5200 4th gear RPM cutoff.

STP Corrected Wheel Power vs. RPM

2015 Mustang



01/30/15

REEVES PERFORMANCE
SuperFlow WinDyn™ V2.2

17:22:31