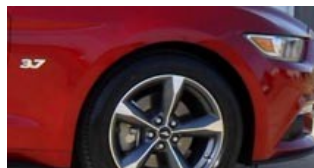


SUPER SIX MOTORSPORTS



NEW PRODUCTS specifically for 2015-up 3.7L V6 Mustang. All of our other 2011-2014 3.7 engine products also fit 2015-up

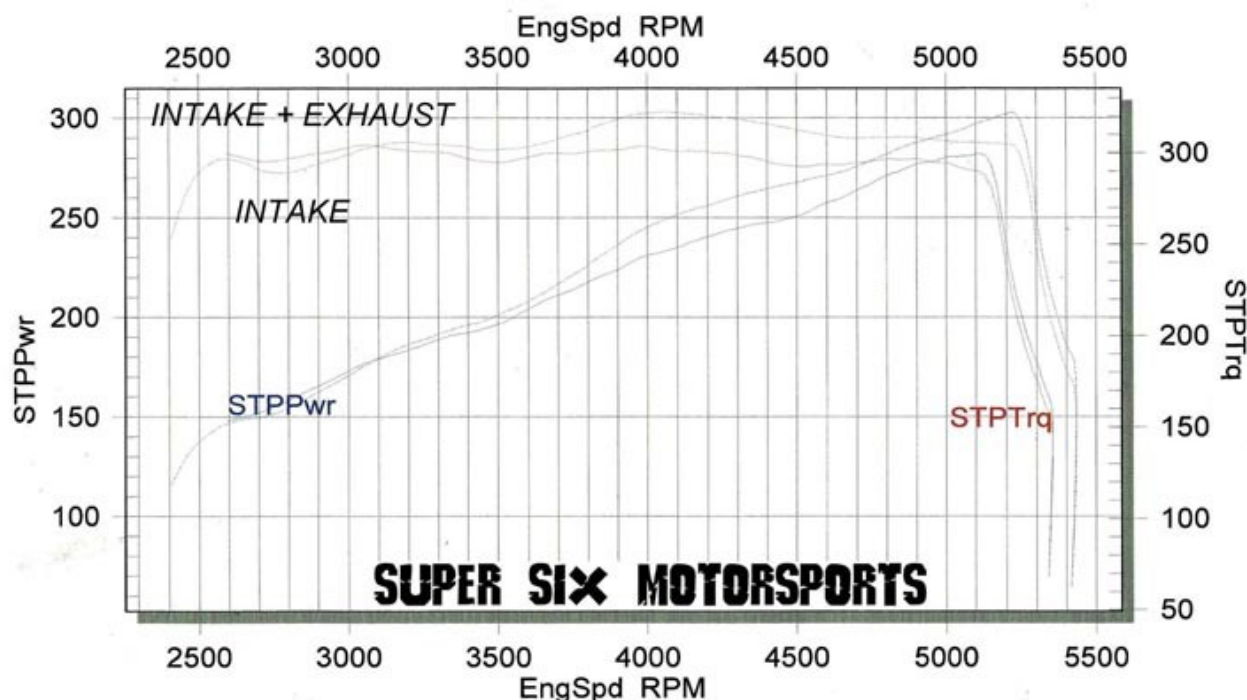
SSM-exclusive Race Exhaust System: \$400.

Hi performance exhaust system replaces stock cat-back exhaust system, 40 lbs lighter than stock, great sound. Includes 2 straight-through 304 stainless steel mufflers, turn-downs and includes EZ install exhaust hangers. Sized for best flow and simple clamp-on installation, no cutting or welding. Provides a great deep tone using the undercarriage as a resonator. Please note that interior resonance is increased but that's the price you pay for more power, great weight savings and killer exhaust note. **Dyno Proven, adds over 20RWHP and 18 RWTQ** as tested with shorty headers, see dyno chart below No tuning required. Check out our sound files!



STP Corrected Wheel Power vs. RPM

2015 Mustang



SUPER SIX MOTORSPORTS